

## ASSESSMENTS AND RESULTING FREQUENTLY ASKED QUESTIONS – MAY 2020



For the future you want

**Following the closure of campuses, all face-to-face teaching and assessment was suspended. At that point, assessment for most students was incomplete.**

**We understand that this may be an anxious and frustrating time for you as you look to plan for your future. The below frequently asked questions have been collated to answer any queries you have about completing your studies, each section contains information specific to course levels.**

### **Session 2019-20– Exceptional circumstance assessment arrangements for HNC, HND, NC, NPA and NQ Freestanding Units**

A model for generating additional assessment evidence has been agreed which will be carried out by the team of lecturers who are delivering your award (the Course Team). This model ensures that students can be recognised for their hard work and the learning they have achieved, whilst maintaining appropriate standards.

#### **Why do I need to still undertake assessments?**

Although face-to-face learning and teaching has been suspended, arrangements have been made in many areas for learning to continue remotely to enable you to complete your course successfully despite the very challenging conditions we are all experiencing currently. Continuing to engage in assessment opportunities will ensure that you have comprehensive assessment evidence which staff will review to reach an outcome decision/result for you.

#### **Shouldn't all students just pass the course? It isn't our fault we can't continue as normal.**

It is vital that any award made is supported by a rigorous and fair assessment process. We recognise the challenge and frustration experienced by our students and we are working hard to support you and to ensure that your hard work and achievement is rewarded.

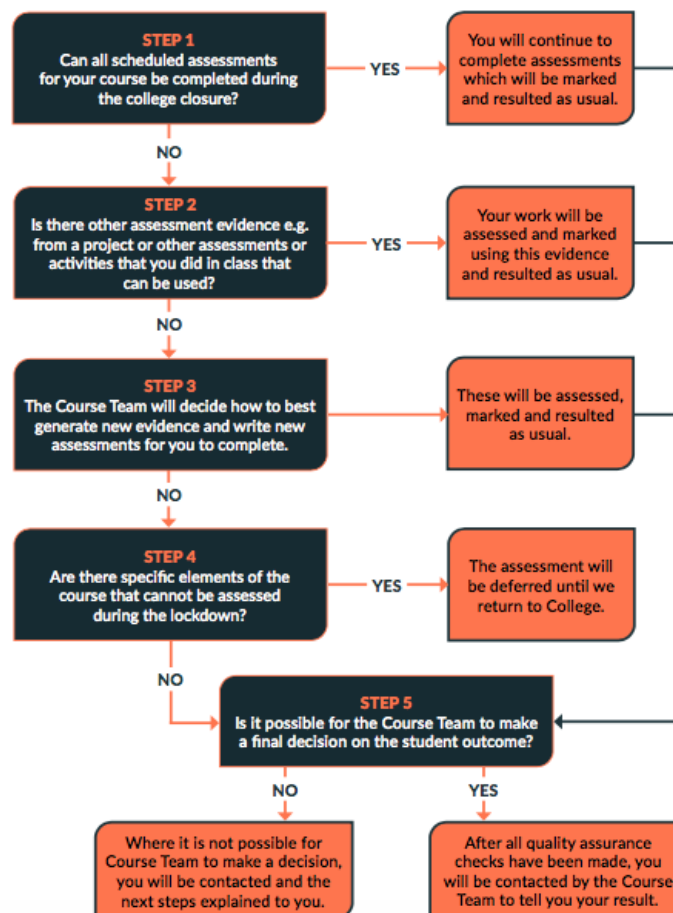
#### **How will my course result be determined?**

Experienced college assessors will engage in a review of all available assessment evidence to assess, for each learner, whether course aims have been met. Using this evidence base, and their knowledge of learner engagement and progress, they will holistically estimate individual learner success.

The below [decision tree](#) shows the process for determining results for HNC, HND, NC, NPA and NQ Freestanding Units:

## Assessment Arrangements during the COVID 19 Emergency

for HNC, HND, NC, NPA, and NQ Freestanding Units



### I have additional support needs. What does all of this mean for me?

Staff will use the most appropriate assessment methodology to make the assessment accessible for you. This will be in partnership with College learning support services. As far as possible, reasonable adjustments that have been recommended for you will be accommodated in assessments taking place throughout the College closure. Where this is not possible, an alternative solution will be arranged. This could include, for example, the use of professional discussion instead of a written exercise if you normally require a scribe. Please contact your tutor or Learning Support Advisor if you have any questions or concerns about this.

### I have a conditional offer from university and my Graded Units will be impossible to complete. What does this mean for my progression?

Where it is not possible to complete the Graded Unit (for example because you have no access to necessary resources or equipment), staff will use any Graded Unit work completed to date plus a range of other assessment evidence to predict and award a grade, where it is possible to do so. This will depend on the quality and sufficiency of evidence available.

**I haven't been able to fully achieve my course because my assessment evidence was insufficient. How and when will I be able to complete any units which I did not get awarded?**

Where you have not achieved your award and this is considered a direct result of the impact of Campus closures, your entry can be left open and you should be given the opportunity to engage in further learning, teaching and assessment when conditions allow. We are seeking to ensure that there is no detriment to learner funding entitlements in these situations.

**What if I don't get the grade I expected?**

If you feel that the assessment outcome reached does not accurately reflect your achievement you will be able to submit an appeal following the College's academic appeals process.

**I don't have computer access to my college. How will my assessment decision be determined?**

It is recognised that, for some students, there are particular barriers to continuing to engage with learning, teaching and assessment. If there is already a significant amount of evidence in place, it may be possible for staff to use this to predict your grade. However, there may simply be insufficient evidence. If this is the case, your entry can be left open and you should be given the opportunity to engage in further learning, teaching and assessment when conditions allow.

**I have caring responsibilities and haven't been able to engage with ongoing opportunities for assessment.**

We recognise that, for some learners, there are particular barriers to continuing to engage with learning, teaching and assessment. If there is already a significant amount of evidence in place, it may be possible for staff to use this to predict a grade. However, there may simply be insufficient evidence. If this is the case, your entry can be left open and you should be given the opportunity to engage in further learning, teaching and assessment when conditions allow. We are seeking to ensure that there is no detriment to learner funding entitlements in these situations.

**Will universities recognise my grades?**

Yes. Your result and grade will result from a rigorous evidence-based assessment process. This will be a valid result which reflects your achievement throughout your course.

**Can I progress within College with an incomplete result?**

This will depend on your individual progress and staff will discuss the available options with you.

**I have a question about my studies which is not answered in this document, what should I do?**

Please speak to your lecturers, they will be able to advise on any questions you have which are specific to your course.

**Where can I find out more information?**

The SQA has created a page on its website to keep learners up-to-date on what is happening with 2020 National Qualifications. [Visit the page here.](#)

## **Session 2019-20 – Exceptional circumstance assessment arrangements for National 5, Higher and Advanced Higher Qualifications**

Following the Scottish Government's announcement that the 2020 exam diet can no longer go ahead due to the COVID-19 emergency, the Scottish education system has been working to ensure that learners' hard work is rightly and fairly recognised.

For this session, therefore, the College has been asked to submit estimated grades for all candidates undertaking National 5, Higher and Advanced Higher awards. These grades will be based on the knowledge, understanding and skills already demonstrated by students during this academic session. To provide reassurance as to the integrity of these estimates, the SQA will moderate estimates to ensure consistency across colleges/schools and fairness to candidates.

Estimates will be submitted to SQA by the end of May and you should receive your results in the normal manner in August 2020.

## **Session 2019-20 – Exceptional circumstance assessment arrangements for SVQs and Professional Development Awards**

We are still awaiting confirmation from examining bodies on how SVQ and some PDA courses will be resulted; we will share this information as soon as it becomes available. Where subject-specific PDA guidance has been issued, course teams will contact students to advise them regarding the requirement for any additional assessment evidence, as appropriate and on an individual basis.

***Please note: This is an evolving situation and the above information will be updated regularly. If you have any concerns regarding COVID-19 in relation to your Edinburgh College studies please don't hesitate to get in touch with [the College](#) or [ECSA](#).***

***Updated on Monday 1 May.***