

NOMINATIONS COMMITTEE

AGENDA

A meeting of the Nominations Committee will be held at 12:30hrs on 18 January 2016 in the Room 4-02, Milton Road Campus.

		Lead Speaker	Paper
1	WELCOME & APOLOGIES	Chair	
2	DECLARATIONS OF INTEREST	Chair	
3	MINUTES OF PREVIOUS MEETING <i>for approval</i>	Chair	A
4	MATTERS ARISING	Chair	B
5	BOARD CAPACITY & COMMITTEE MEMBERSHIP <i>for approval attached</i>	P Davis	C
6	ANY OTHER COMPETENT BUSINESS		
7	DATE OF NEXT MEETING: Tuesday 08 March 2016		

BOARD CAPACITY AND COMMITTEE MEMBERSHIP

Purpose of Report

The Board of Management conditionally approved the appointment of four non-executive members on 08 December, subject to Scottish Government approval and satisfactory completion of the recruitment process. Further to this, the Board agreed that the Nominations Committee would review committee membership once appointments had been finalised.

Ministerial approval was granted on 15 December, bringing the Board's non-executive membership to its full complement of 12.

In line with the request of the Board, the Nominations Committee are now asked to review committee membership. To support the Committee's considerations please find attached an overview of Board membership, a non-executive skills matrix and a committee membership chart (as agreed by the Board in June 2015).

The Governance Director will put forward optional revised committee charts, based on the following considerations, at the Committee meeting on 18 January:

- Members' knowledge and expertise
- Members' development goals/interests
- Gender balance
- Staff and Student representation
- Succession planning.

Action Required

The Committee are asked to **CONSIDER** the current capacity of the Board and **APPROVE** a committee membership proposal put forward by the Governance Director.

Strategic Implications

Risk	Yes \ No	Details
Governance \ legal	Yes	The Committee is required to consider and make recommendations to the Board on Committee membership.
Financial	No	
Executive Approval	Yes \ No	Details
Reviewed by Executive	No	
Other	Yes \ No	Details
Equality Impact	No	The gender balance of the Board is currently 50% Male; 50% Female, similarly amongst the non-executive the balance is also even.

Appendices

1. Board Membership & Tenures
2. Non-Executive Board Members Skills Matrix
3. Committee Membership Chart

BOARD MEMBERSHIP & TENURES

As of January 2016, the Edinburgh College Board of Management membership is as follows:

	Forename	Surname	Position	Date of Appointment	Tenure Expires
1	Ian	McKay	Regional Chair	01.10.12	02.03.18
2	Colin	Arthur	Academic Staff Member	01.03.15	01.03.19
3	Jenni	Behan	ECSA Vice President (Welfare)	01.07.15	30.06.16
4	Kellie	Bradford	Support Staff Member	01.03.15	01.03.19
5	Annette	Bruton	Principal	18.05.15	N/A
6	Sandra	Cairncross	Non-Executive	01.03.15	01.03.18
7	Bob	Downie	Non-Executive	09.02.16	TBC
8	Stephen	Dunn	Non-Executive	09.02.16	TBC
9	Alan	Johnston	Non-Executive	01.03.15	01.03.18
10	Ann	Landels	Non-Executive	09.02.16	TBC
11	Elaine	Lee	Non-Executive	01.03.15	01.03.18
12	Niki	McKenzie	Non-Executive	01.03.15	01.03.18
13	Nigel	Paul	Non-Executive	01.03.15	01.03.18
14	Fiona	Riddoch	Non-Executive	20.10.15	20.10.18
15	Azra	Sharif-Qayyum	Non Executive	09.02.16	TBC
16	Robin	Stimpson	Non-Executive	01.03.15	01.03.17
17	Jeroen	Van Herk	ECSA President	01.07.15	30.06.16
18	Ian	Young	Non-Executive (Vice Chair)	01.03.15	01.03.17

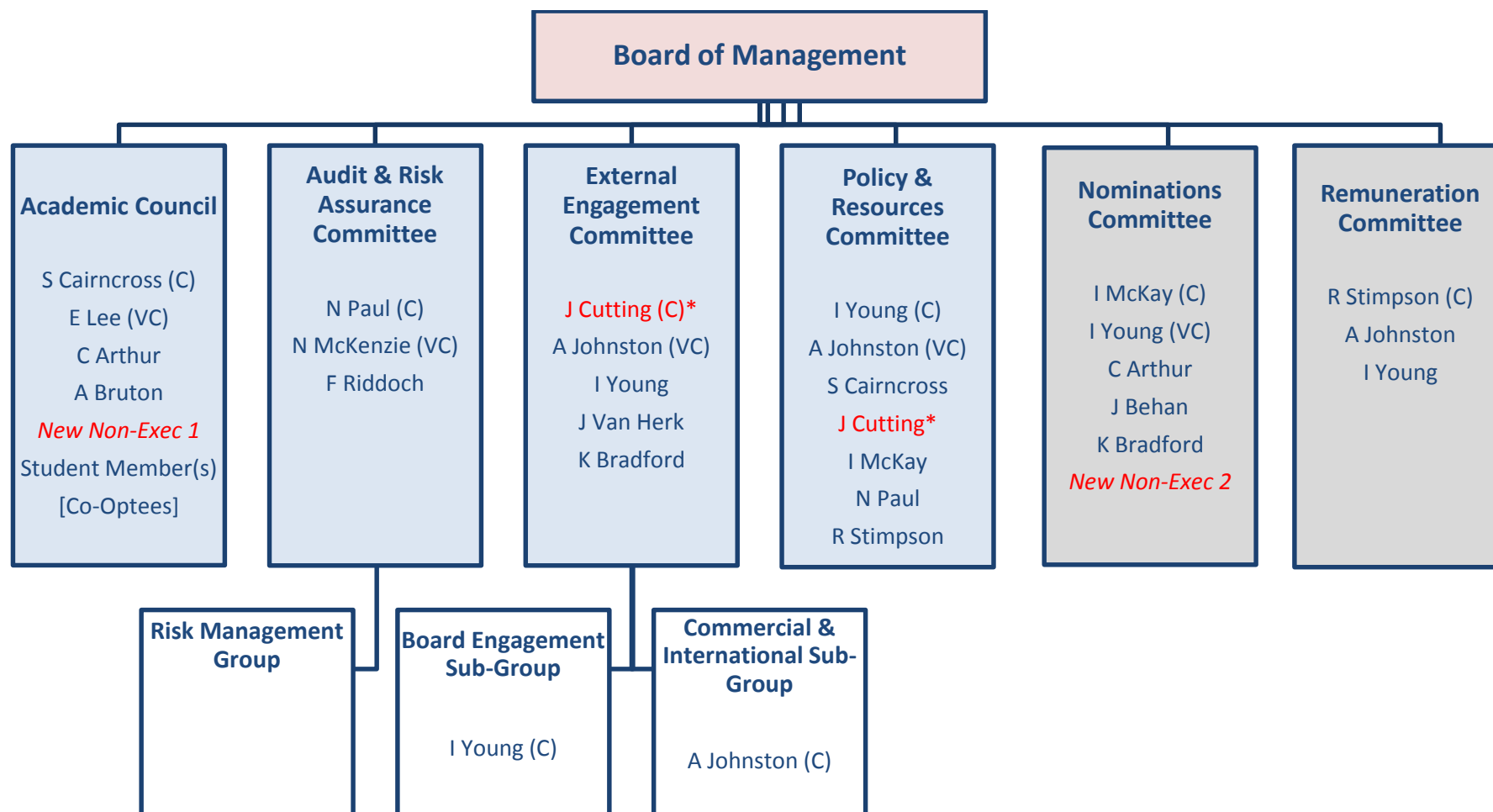
NON-EXECUTIVE BOARD MEMBERS SKILLS MATRIX

	ESSENTIAL		DESIRABLE						NOTES
	Finance, Risk & Audit (x2)	Industry linked to Curriculum (x4)	Education/ Universities/ Schools	Legal	HR/OD/ Change Mgmt	Comms & Marketing	Estates & Infrastructure	Community Engagement/ Youth	
Sandra Cairncross		X	X						<ul style="list-style-type: none"> - Assistant Principal (Student Experience), Napier University; - Former Dean of Engineering, Computing and Creative Industries; - Chair of Equate Scotland: Women in STEM Advisory Board.
Bob Downie		X				X			<ul style="list-style-type: none"> - CEO Royal Yacht Britannia - Former Vice Chair of Scottish Tourism Leadership Group
Stephen Dunn		X			X		X		<ul style="list-style-type: none"> - Ex Group Director HR and Communications Miller Group - Former Corporate Services Director at ScottishPower - Background in strategic change management in large organisations
Alan Johnston		X							<ul style="list-style-type: none"> - Former Commercial Director, Inveresk Research; - Specialism in science based business and commercial management; - Non-executive career in business and personal/charitable interests.
Ann Landels			X					X	<ul style="list-style-type: none"> - Director Crisis Skylight - Ex local authority education leadership role
Elaine Lee					X				<ul style="list-style-type: none"> - Former Senior Strategy & Engagement Manager, Lloyds Banking Group; - Strategic development background within financial & business services.
Ian McKay			X		X	X			<ul style="list-style-type: none"> - Chair of Edinburgh College Board & Chair of Institute of Directors; - Former Director of Royal Mail Group in Scotland; - Consultant in high-level facilitation and mediation.
Niki McKenzie	X								<ul style="list-style-type: none"> - Investment Executive, Archangel Investors Limited; - Chartered Accountant.
Nigel Paul	X		X						<ul style="list-style-type: none"> - Former VP & Director of Corporate Services, Uni of Edinburgh; - Chartered Accountant; - Chair of FlowaveTT Ltd (ocean energy research and testing service).
Fiona Riddoch		X							<ul style="list-style-type: none"> - Managing Director, COGEN Europe; - Science, engineering and renewables background; - Experienced CEO with background in lobbying / stakeholder relations

Azra Sharif-Qayyum		X						X	<ul style="list-style-type: none"> - Founding member of Edinburgh Mela - ELREC Member/Committee Chair - Practising biomedical scientist 	
Robin Stimpson				X				X	<ul style="list-style-type: none"> - Former Partner, Anderson Strathern LLP (law firm); - Legal specialism in property and charity law. 	
Ian Young								X	X	<ul style="list-style-type: none"> - Former Director of Strategic Services, Midlothian Council. Responsible for public services, Inc. property, economic development, planning etc.; - Previously Chair of Jewel & Esk College.

COMMITTEE MEMBERSHIP CHART

The information below outlines the Board of Management governance structure and membership as of December 2015. Terms of reference for the committees of the Board of Management can be accessed [here](#).



**Please note: Jan Cutting stepped down from the Board of Management in January 2016.*