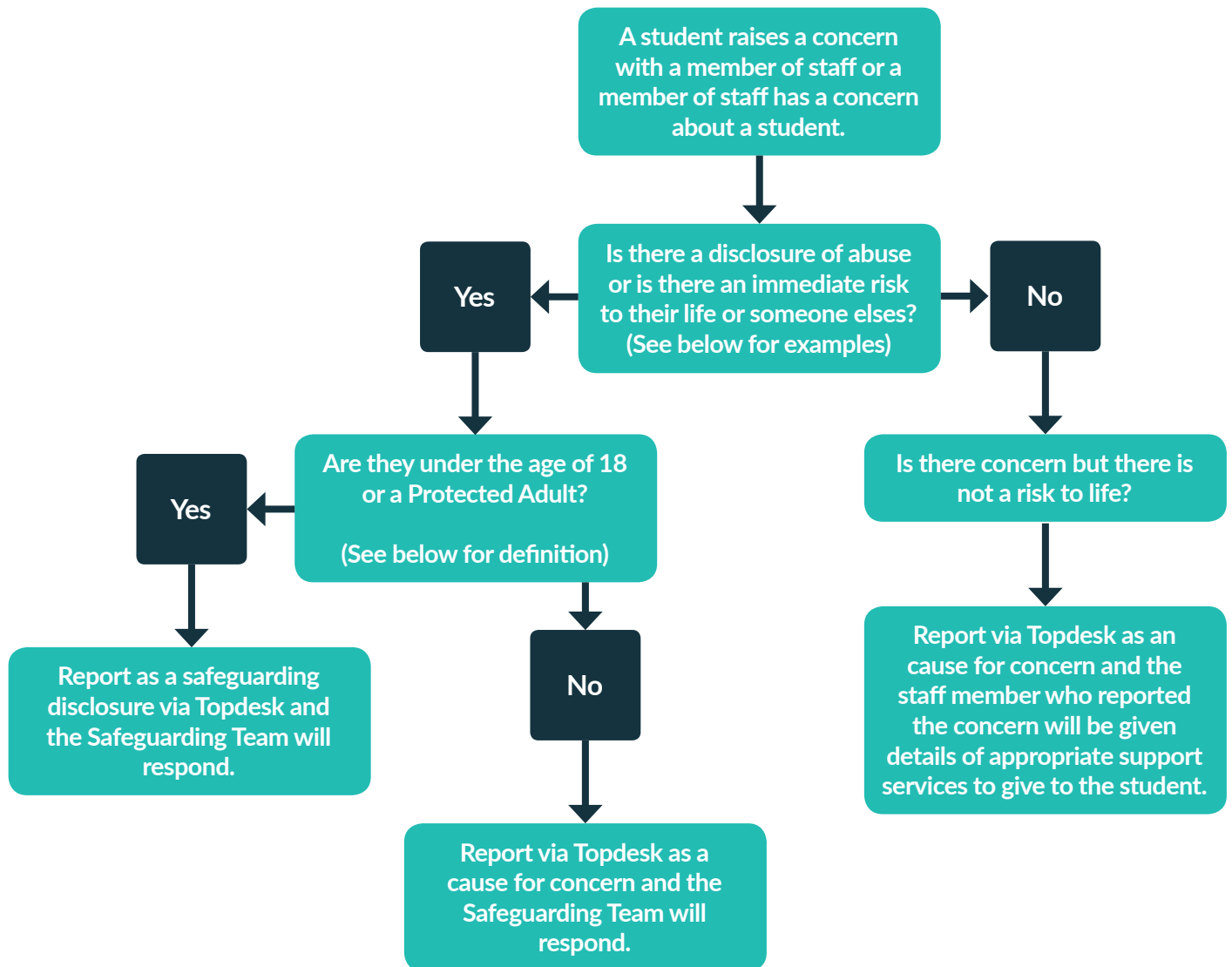


SAFEGUARDING FLOWCHART



For the future you want



References

- Examples of abuse – Physical, Emotional, Financial, Sexual and Neglect
- Risk to life – When someone has a suicide plan or is in the process of ending their life*
- Risk to life by threatening violence in an emergency phone 999

*For more information please see refer to the Crisis Action Plan in the Student Mental Health and Wellbeing Policy Guidance for Staff.

A Protected adult is defined as someone who is over 16 and

- is unable to safeguard themselves, their property, rights or other interests, and
- is at risk of harm, and
- because they are affected by disability, mental disorder, illness or physical or mental infirmity, are more vulnerable to being harmed than others who are not so affected

(Scottish Government)