

# key facts

Edinburgh College 2014



# key facts 2014

## contents

|                              |       |
|------------------------------|-------|
| Edinburgh College            | 3     |
| our vision and values        | 4     |
| our students                 | 5     |
| where do our students study? | 6     |
| where are our students from? | 7/8   |
| our graduates                | 9     |
| our staff                    | 10    |
| our college                  | 11    |
| enterprise and innovation    | 12/13 |
| student success              | 14    |

# Edinburgh College

With around 26,000 student enrolments across four campuses in Edinburgh and the Lothians, Edinburgh College is one of the largest colleges in the UK.

Offering a wide variety of vibrant vocational and academic courses, we provide flexible learning opportunities to suit all learning needs, with 900 courses ranging from Access and short courses to HNC, HND and degree level on a full and part-time basis.

Our academic centres have skilled, knowledgeable staff with expertise in specialist areas to offer our students the very best educational experience. The curriculum is designed to meet the needs of industry and we are continually committed to the highest academic standards and excellence in learning and teaching.

Ninety-two per cent of our graduates were in employment or further study within six months

of graduating with us. We are committed to ensuring our students are prepared for successful careers through work placements, internships and connections to industry.

Since opening our doors on 1 October 2012, we have established a strong reputation for academic excellence. The joining together of our legacy colleges brought together the best of our previous talents and blended it with new ideas to make Edinburgh College what it is today. Our people are the heartbeat of the organisation and we aim to develop a college that enables our students, our staff and our local communities to thrive ■



## our vision and values

### vision/

Working together with students and staff to deliver a prosperous economy

### values/

We will operate with respect, great integrity, real ambition and inclusiveness.



**£66.2 million**

Our annual turnover

\*Unless otherwise stated, figures are for 2012 - 13

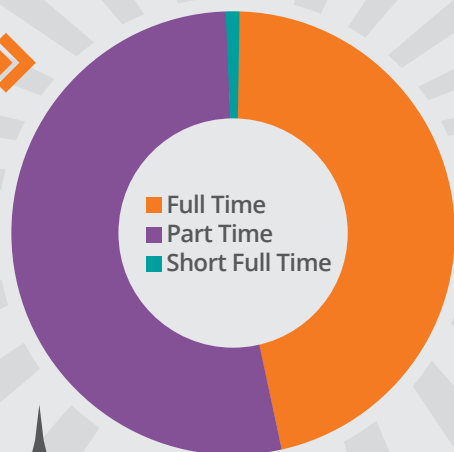
## our students



**26,000**  
student  
enrolments



We have around  
**26,000** student  
enrolments over a  
variety of courses



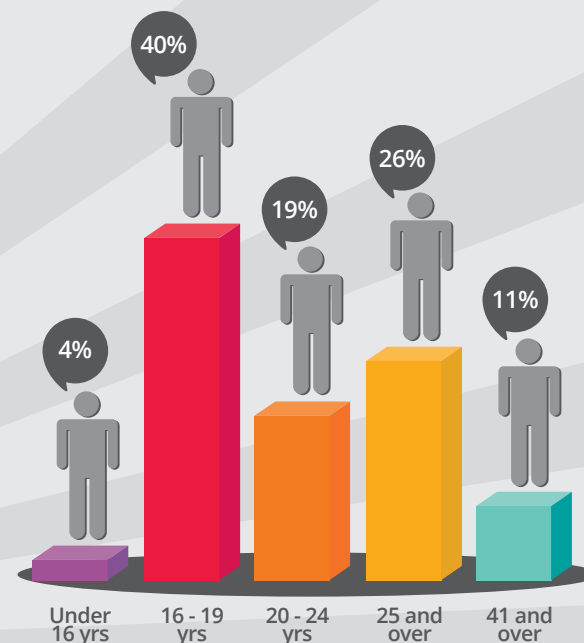
\*based on 2013-14 figures

**92%**

Graduates in employment  
or further study within  
6 months of graduating

## where do our students study?

How old are our students?



- College Community
- Creative Industries
- Business School
- Engineering +
- Health, Wellbeing & Social Sciences
- Institute of Construction & Building Crafts
- English for Speakers of Other Languages (ESOL)
- Tourism & Hospitality Academy



The average age of  
our students

# where are our students from?

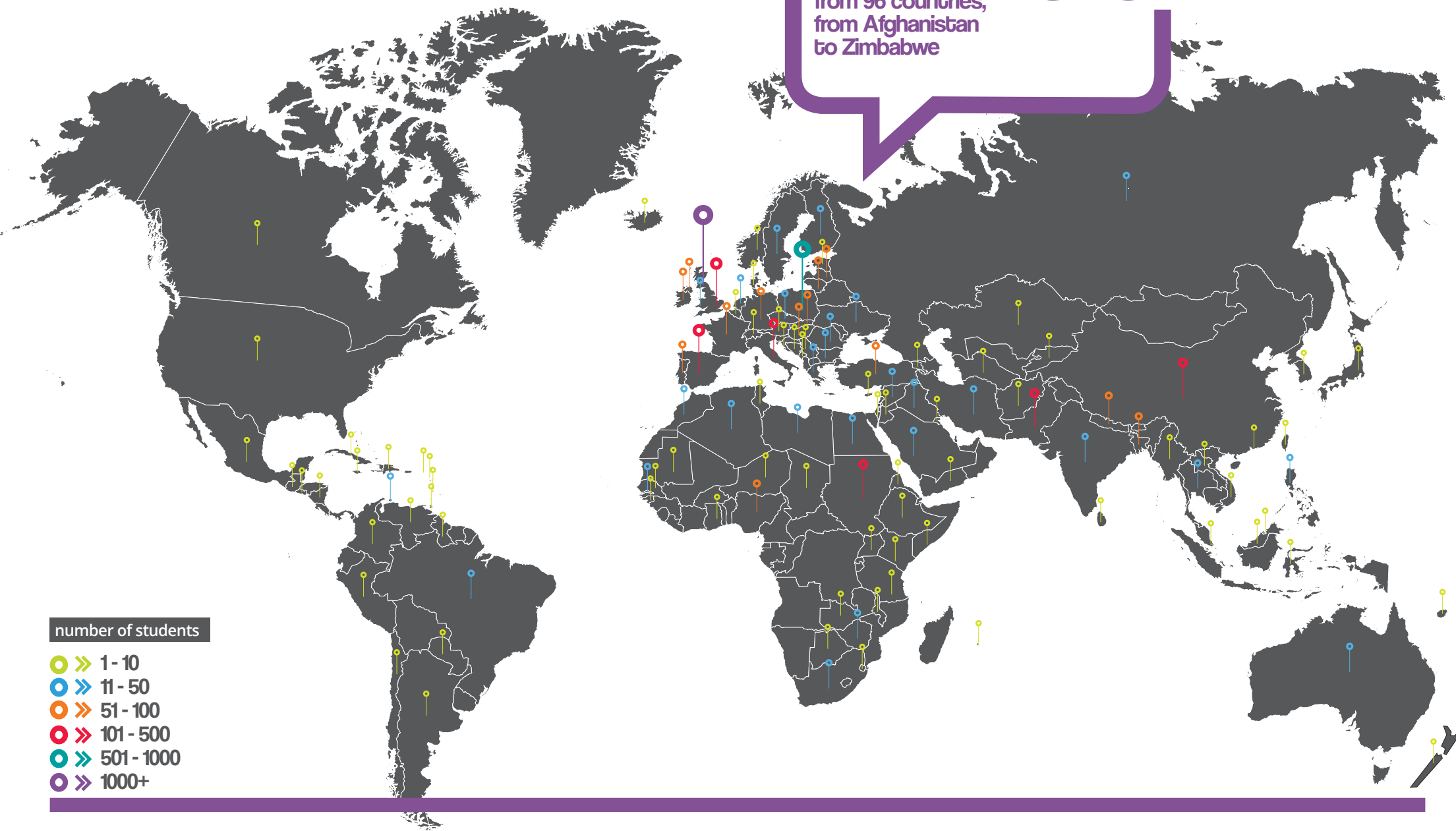


# 96

We have students  
from 96 countries,  
from Afghanistan  
to Zimbabwe

## number of students

- 1 - 10
- 11 - 50
- 51 - 100
- 101 - 500
- 501 - 1000
- 1000+



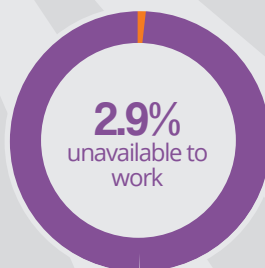
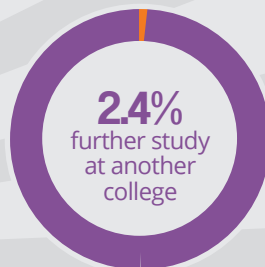
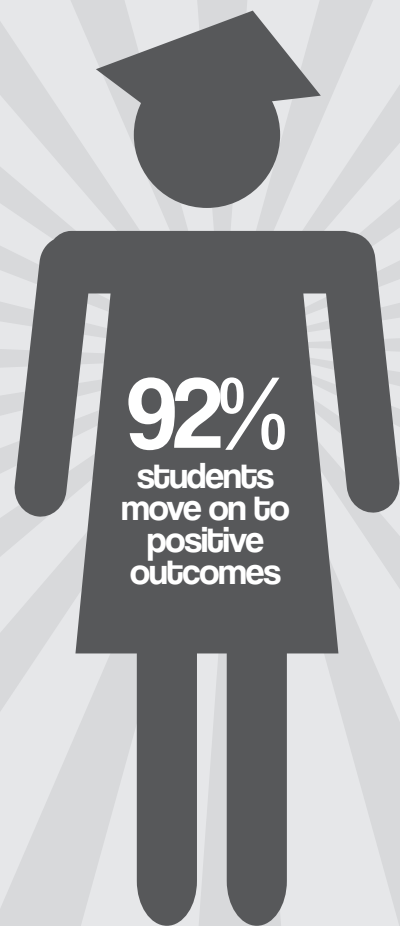
## our graduates

Ninety-two per cent of full-time students moved on to positive outcomes in 2012, either work or further studying, on successfully completing their courses with us. This is an excellent success rate and underlines our important role in providing talent for businesses in Edinburgh, the Lothians and beyond.



**20.3%**

students moved on to university



**1.5%**



of our students are self employed

We have around 1,400 members of staff across all of our campuses and outreach centres.

**45**

**Staff members**

successfully completed teaching qualifications in 2012/13, ensuring they are developing up-to-the-minute skills to offer the best education possible to our students.

**47%**

**Teaching staff**

**53%**

**Support staff**

# our staff



# our college

**4** Our four main campus buildings are located across Edinburgh and the Lothians: in the north, east and west of the city and in Midlothian.

With hundreds of links with industry and strong relationships with our local universities, communities and businesses, we have the right connections to boost employment opportunities for our graduates to allow them to seize life-changing opportunities.

Thirty smaller outreach centres support our programmes in local communities, among

them the Hibernian Learning Centre, the Pennypit Centre and Duncan Place Resource Centre.

**Sighthill Campus** was given a £5million facelift in 2013, including a new café, mezzanine level and base for the Students' Association. The project created state-of-the-art learning and social areas to suit a modern college environment ■

We engage with more than **1,000** businesses across Scotland, the UK and worldwide.

We have developed a reputation for innovation as a result of our strong commitment to seeking groundbreaking new ways to act sustainably and invest in our local community.

**Our solar meadow**, which opened at Midlothian Campus in April 2013, has 2,560 solar panels. This has reduced carbon emissions by 300,000kg per year and will save us £50,000 annually in bills. It is also used as an outdoor classroom.

Six hundred and fifty solar panels help to power our Granton Campus, generating around 50 kilowatts of energy per hour.

We spend **£7million** with suppliers in the Edinburgh and Lothians region.



- We joined forces with Heriot-Watt University to develop a pioneering training project that will see our construction students suspended 100 metres in the air without leaving the classroom, thanks to mixed reality and motion tracking technology.
- Our fleet of electric vehicles has saved 6.5 tonnes of CO<sub>2</sub> in one year and generated important research data.
- We are installing 30 public electric vehicle charging points across Scotland.

enterprise **and** innovation

# enterprise and innovation

■ In partnership with NHS Lothian, City of Edinburgh Council and Midlothian Council, we have developed the NHS and Local Authorities Facilities Academy that will offer over 16s the chance to learn about a range of roles in facilities within catering, estates and domestic services.

■ Since opening in June 2013, our Creative Exchange in Leith – a creative industries business hub and workspace – has supported 58 businesses. The Creative Exchange is a partnership with the City of Edinburgh Council and aids creative and digital entrepreneurs, providing space and state-of-the-art facilities to operate and collaborate, as well as business support to set up and develop.

**£4.6m**  
to create new  
academies

■ The South East Scotland Academies Partnership – which began with the East Lothian Hospitality and Tourism Academy and is run with Queen Margaret University and local councils – has received £4.6million to create new academies in other curriculum areas – Food Science and Nutrition; Creative Industries; and Health and Social Care.

■ We awarded £100,000 as part of our Green Transport Prize with Edinburgh Napier University and the University of St Andrews to fund the future of sustainability technology.

■ We work with 178 volunteers from the college, partners and local organisations in our Milton Road Community Garden and are now establishing a community garden on unused land at Sighthill Campus ■

**£100,000**  
green transport prize



# student success

**60**

students and staff have won national awards for their talents across all of our centres.

**2%**

above the sector average for FE students who successfully complete their course

**5yrs**

Our OPITO apprentices have won the title of Apprentice of the Year in succession.

One hundred and forty five students have enrolled on our associate student programmes to widen access to university in the areas of engineering, IT management, civil engineering and hospitality and tourism management.



 [facebook.com/EdinburghCollege](https://facebook.com/EdinburghCollege)  
 [@edinburghcoll](https://twitter.com/edinburghcoll)



t: 0131 669 4400  
e: [info@edinburghcollege.ac.uk](mailto:info@edinburghcollege.ac.uk)  
w: [edinburghcollege.ac.uk](http://edinburghcollege.ac.uk)